



## Hampstead Heath Consultative Committee

**Date:** MONDAY, 13 MARCH 2017  
**Time:** 7.00 pm  
**Venue:** PARLIAMENT HILL CONFERENCE ROOM, PARLIAMENT HILL STAFF  
YARD, PARLIAMENT HILL FIELDS, HAMPSTEAD HEATH, NW5 1QR

### 5. SUPERINTENDENT'S UPDATE

**For Discussion**  
(Pages 1 - 18)

Item received too late for circulation in conjunction with the Agenda.

**John Barradell**  
Town Clerk and Chief Executive

This page is intentionally left blank

<b>Committee</b>	<b>Dated:</b>
Hampstead Heath Consultative Committee	130317
<b>Subject:</b> Superintendents Update	<b>Public</b>
<b>Report of:</b> Superintendent of Hampstead Heath	<b>For Discussion</b>
<b>Report author:</b> Bob Warnock – Open Spaces Department	

## Summary

This report provides an update to Members of the Hampstead Heath Consultative Committee on management and operational activities across the Heath since January 2017.

## Recommendations

It is recommended that:

- Members provide feedback to the Superintendent on the contents of this report, and specifically in relation to the Vision and Collection Plan for Golders Hill Park Zoo, the use of Drones on Hampstead Heath and the recommendations for the provision and management of bench dedications.
- Members of the Consultative Committee are invited to form an Advisory Group to provide advice and local knowledge to support the Management Plan community engagement project.
- Members of the Consultative Committee are invited to attend a meeting with Camden Cyclists that the Superintendent will chair, to discuss a range of minor proposals for cycling on the Heath.
- That the views of the Hampstead Heath Consultative Committee are conveyed to the Hampstead Heath, Highgate Wood and Queen's Park Committee at their May meeting.

## Main Report

### Open Spaces Bill

1. Committee proceedings concluded on the City of London Corporation (Open Spaces) Bill. The Committee agreed that one clause which provided for the issue of anti-social behaviour notices could be withdrawn. The Committee agreed that the City Corporation could obtain the powers under national legislation. This followed discussions with the Home Office on prospects of obtaining a statutory order specifying the City Corporation as entitled to issue

such notices. This resolved the issue on which the previous hearing focused, having been raised by the Kennel Club. The remainder of the Bill was approved and now awaits a date to be fixed for consideration by the whole House of Commons.

### **Management Plan Engagement**

2. The Superintendent is currently in the process of procuring a company to lead the engagement process to develop a community vision for Hampstead Heath to inform the 2018 Management Plan.
3. The aims of the community engagement are to:
  - Prepare an audience development plan for the Hampstead Heath.
  - Deliver engagement activities that achieve representative engagement of the wider Hampstead Heath community to capture community aspirations.
  - Prepare a draft vision statement for Hampstead Heath.
4. The Superintendent expects to appoint the successful tenderer in March and invites expressions of interest from Consultative Committee Members to form an advisory group to provide advice and local knowledge to the community engagement project between March and July 2017.

### **Update on Capital Projects**

5. The Capital Projects associated with East Heath Car Park, The Hive and the playgrounds at the Adventure and Peggy Jay Centre were considered by the Hampstead Heath, Highgate Wood and Queen's Park Committee (HHHWQPC) on the 30 January 2017. It was agreed that they should proceed to the Project Sub Committee the following day. All three projects were approved at Gateway 2 and permitted to proceed toward their next Gateway. For East Heath Car Park this will involve an options appraisal and further consideration by this Committee and the HHHWQPC before submitting a report to Gateway 3. Following this, the report will be considered by the Corporate Priorities Board to request funding from the City's Cash provision for new schemes.
6. Detailed project plans for the Hive and the Playgrounds at the Adventure and Peggy Jay Centre are being prepared. This will involve engagement, consultation, design and a funding strategy. The Consultative Committee will be consulted prior to completion of the tender report.

### **Golders Hill Park Zoo – Vision & Collection Plan**

#### The Vision

7. There have been animal enclosures in Golders Hill Park since the early part of the twentieth century. The Animal Collection Plan was last reviewed in July 2011 and agreed by Committee. The City has a legal duty to comply with the Zoo Licensing Act 1981, including its Appendix 11 Secretary of State's Standards of Modern Zoo Practice. Inspection takes place every three years

and the Zoo retained its license following the most recent inspection on 11 November 2016. It was noted and commented by the inspectors that the Collection Plan and Vision were being reviewed. Appendix 1 is a first draft of this and includes an overarching vision, together with four key themes (Welfare / Welcoming / Engagement / Collection) for delivery of this vision, plus an outcomes framework with key indicators and performance measures.

### The Collection Plan

8. The aim of the Collection Plan is to develop a strong narrative thread that runs through all aspects of the Animal Collection. This will influence the choice of species, site aesthetics, learning opportunities and the overarching message we aim to deliver to the public. So far as is possible, we will also maintain a clear connection with wildlife found on the Heath, particularly through our interpretation and Learning Programme. The guiding story will be that of 'Wildlife in Britain'.
9. This focus encompasses past, present and future species inhabiting the British Isles, reaching back as far as the loss of the eagle owl as a native inhabitant, through the losses and gains coinciding with human history, and looking ahead to the future impact of species newly arrived on our shores. To this end, it is our intent that eventually, every species housed in the Collection will fit into at least one of the following overlapping categories; current native species, historic native species and introduced/invasive species.
10. **Current Native Species:** Those species that reside naturally in Britain today. Some such as the red squirrel and wild cat are often used as champions for native conservation efforts and are being considered as part of the Collection Plan. The number of native British mammals surviving today is greatly reduced from historical levels, leaving us with only around 30 terrestrial mammal species. The collection will use some of these to highlight the degree to which wildlife in Britain has changed over the centuries due to human impact and conflict with invasive and introduced species.
11. **Historical Native Species:** The British Isles were once home to a great many more mammal species than survive today. A combination of natural climate change, human intervention and habitat loss has meant that many species have been wiped out or naturally receded from Britain, although most persist on the European mainland. These include Eurasian eagle owl (one of our current visitor favourites), together with many unexpected species such as grey wolf, brown bear, wild boar\*, Eurasian beaver\*, Eurasian lynx\*, aurochs (wild cattle), elk, reindeer, European bison and even wolverine. Security concerns mean that many of these species are unsuitable for the Collection at Golders Hill Park, but they will form an important aspect of our interpretation and learning programme.

*\*Have either been reintroduced or are currently proposed for reintroduction.*

12. **Introduced / Invasive Species:** A significant number of species have only inhabited the British Isles, forming successful breeding populations, in more recent times. These species arrive either by natural spread (little egrets since 1996), escapes (parakeets in the 1970s) or unauthorised releases (wild boar 1970-90s). In addition, some of our most commonly seen mammal species are the result of intentional releases. This includes both brown and black rats (spread from Asian with maritime travel) the grey squirrel (introduced in the 1870s) which has had a catastrophic impact on our own native red squirrel population.
13. Other examples of introduced / invasive species currently living, breeding and competing for resources in the British Isles include: red-necked wallaby, Reeves muntjac, Sika deer, water deer, fallow deer, common pheasant, edible dormouse, rabbit, hare, terrapins and the American mink. While some of these species are obvious outsiders, many visitors will be surprised by the presence of at least some of these names as being non-native. The impact and integration of this type of species are a significant part of the tale of the changing nature of Wildlife in Britain.
14. In summary, implementing these three overlapping categories will enable us to transform the Zoo Animal Collection into a well-structured, high quality public resource which reflects the changing nature of Wildlife in Britain and promotes engagement with wildlife.
15. The Superintendent seeks feedback on the draft Golders Hill Park Zoo Vision & Collection Plan (see Appendix 1) and the draft enclosure plan (see Appendix 2).

### **Cross Country Running**

16. The Southern Counties Cross Country Championships took place on 28 January 2017. The weather was dry in the lead up to the event, and on the day itself, so consequently the ground conditions were very favourable. As a result, less restoration works will be required when compared to previous years. Oak chippings were used in replacement of the Christmas tree chippings which have been used in previous years to protect asphalt surfaces. The Ranger Team installed temporary barriers following the event to aid the recovery of particular sections of the course. A map detailing restoration works undertaken and proposed works has been prepared (see Appendix 4).
17. On 18 February 2017 the North West London Young Athletes Cross Country League held a pilot fixture on the Heath Extension. 114 boys and 87 girls took part; the event was well organised and proved to be successful. The Operational Services Manager has reviewed the ground conditions following the event. Due to the favourable firm ground conditions, leading up to and during the event, and the number and ages of the runners, there is minimal impact on the ground. The Sports Advisory Forum will undertake a review of the event and the outcomes of this review will be reported to the Consultative Committee.

## **Cycling**

18. The Superintendent and Highgate Wood, Conservation & Trees Manager met with a member of the public and a representative from Camden Cycling Forum on 24 February 2017 to discuss the shared use of the Lido to broadwalk path for both pedestrians and cyclists. The route runs north south and would potentially link the main cycle path running from Highgate Road to Nassington Road with Gordon House Road and designated cycle routes going south to Kentish Town and Central London.
19. This proposal has been discussed by both the Consultative Committee and HHHWQPC previously. The most recent proposal was withdrawn following the failure of the Heritage Lottery Fund application to create a new vehicle route to the Service Yard at Parliament Hill.
20. The Highgate Wood, Conservation & Trees Manager is working with a small cycling group to discuss how the current cycling provision can be maintained on Hampstead Heath. It is planned to incorporate this proposal in the groups discussion. The group which involves a Local Councillor and a representative from Camden's Cycling Forum will be meeting again in March with the Superintendent to discuss this proposal and other cycling issues. Two representatives from a campaign group known as 'Heath for Feet' and two Members of the Consultative Committee will be invited to attend this meeting. The Superintendent will chair the meeting and report to the June Consultative Committee with the outcomes.

## **Eruv**

21. The Superintendent has established that the location of the proposed Eruv pole at Windmill Hill does form part of Hampstead Heath. Minutes of both the Consultative Committee and the Management Committee have been provided to the applicant and a further site meeting is being arranged to consider how the visual impact of the Eruv on the Heath could be minimised.

## **Drones**

22. On the 7 November 2016 the Superintendent reported to this Committee that Heath Lands were considered a 'congested area' as defined in the Air Navigation Order 2016. The Metropolitan Police, Aviation Policing Operational Command Unit and the City of London Police have been consulted with as have the Civil Aviation Authority (CAA).
23. Draft Drone Guidance has been produced, which sets out the City of London's approach when responding to drone usage and requests to fly drones on Hampstead Heath.
24. The introduction of a Drone Guidance will enable City of London Officers to signpost drone flyers to the Air Navigation Order 2016 (ANO 2016) and support

the education of drone flyers on Hampstead Heath who are in compliance with the ANO 2016.

25. Drones are widely available on the market for commercial and recreational use. If these small unmanned aircraft are not used responsibly, they have the potential to cause injury to persons or damage to property. Drones are subject to safety rules which are underpinned by U.K Legislation.
26. The City of London will expect people flying drones to abide by the Air Navigation Order 2016 and follow the CAA Drone Code.
27. In simple terms, a camera drone may not be flown on or even close to the Heath without permission from the CAA. A drone that does not have any surveillance equipment may be flown on the Heath for personal use, without permission from the CAA, subject to certain restrictions. A more detailed explanation is set out in the Draft Drone Guidance Document.
28. The Superintendent seeks feedback on the Draft Drone Guidance Document (see Appendix 3).

## **Benches**

29. Work on the Bench Project continues, with the mapping and surveys that took place in 2016 providing detailed information about the location, construction and condition of over 550 benches across the Heath. Supervisors are preparing a Bench Work Plan for 2017/18 as set out in the Annual Work Programme. Priority areas include continuation of the improvement works at the summit of Parliament Hill, reinstatement of benches affected by the Ponds Project, and benches across all areas that are reaching the end of their lifespan.
30. Recommendations for the provision and management of bench dedications at Hampstead Heath:
  - i) Maintain the current cap on the number and distribution of benches across the Heath and prepare and maintain a Schedule of Locations which will be updated annually to reflect Annual Work Programmes and reviewed periodically (a ten year review period is recommended to align with review of the wider Management Plan for Hampstead Heath).
  - ii) Apply a design standard to bench renewals and replacements to ensure benches are in keeping with the landscape characteristics and achieve a consistent standard. To this end, a schedule of appropriate bench styles will be developed, expanding on the current styles found across the Heath (and phasing out less desirable styles).
  - iii) Continue to implement a standard dedication period of ten years for all benches with an option for applicants to extend their sponsorship on a ten yearly cycle (at the published fee).



- iv) Continue to maintain a waiting list for bench dedications and to offer benches for re-dedication as they become available. Aim to reduce the waiting list for a bench dedication on Hampstead Heath to a maximum of 50 applicants and to cap it at this level in future.
- v) Revise the current guidance for dedicating a bench to ensure it aligns with the wider offer across the Open Spaces Department.
- vi) Prioritise the renewal and re-dedication of benches that are reaching the end of their life span. A large proportion of benches on the Heath are over 20 years old and no current contact details for the past sponsors are held on file. Recognising the sensitive nature of the removal of benches that have been dedicated in the past every effort must be made to respect the wishes of the original sponsors. To this end, the following protocol is proposed for the notification of bench renewals:
  - a) Commence notification 12 months prior to scheduled bench renewal.
  - b) Offer first right of refusal for re-dedication of the bench to registered sponsor (where sponsor records are current).
  - c) Place a notice on the bench at least 3 months and up to 12 months prior to the scheduled bench renewal (where sponsor records are no longer current).
  - d) Retain timber slats bearing the inscribed dedication and store securely for a period of 2 years in the event that a sponsor wishes to claim at a later date.

31. The Superintendent seeks feedback on the recommendations for the provision and management of bench dedications at Hampstead Heath to inform the development of the policy.

### **Planning**

32. The Superintendent will provide an update on planning issues relating to Heath House, The Water House, Parliament Hill / William Ellis Schools, 114-120 West Heath Road and 84 West Heath Road.

### **The Good, The Bad and The Ugly – Art installation at Golders Hill Park**

33. The Superintendent has received confirmation that the art installation, The Good, The Bad and The Ugly by Jake & Dinos Chapman will be de-installed from Golders Hill Park on 27 February 2017. The cost of de-installation from Golders Hill Park will be met from the Superintendents Local Risk Budget.

34. The Superintendent has received a proposal regarding a possible new art installation on Hampstead Heath. The Superintendent is currently seeking further information from the artist and, if appropriate, will bring a proposal for consideration by the Consultative Committee in due course.

## **Storm Doris**

35. The decision was taken on 22 February to close Golders Hill Park, The Hill Garden & Pergola, Highgate Wood and Queen's Park on the 23 February, in anticipation of Storm Doris. In addition, the Kenwood Ladies' Pond was vacated in the afternoon of 23 February, and English Heritage closed the Kenwood Estate at 12.30pm.
36. The latest update is 22 trees have been damaged, 14 of which were lost (felled, root plate failures, stem failures) and 8 with significant crown/branch damage. A Lombardy poplar has been reduced on the Heath Extension following concerns that the main stem had moved.
37. The Heath Ranger Team and Conservation Team have been actively working on a number of trees around the Heath to clear the storm damage, and the Tree Officer is continuing to survey the Heath.

## **June Consultative Committee Walk**

38. It is proposed that the June walk will include a visit to the outdoor play facilities on Hampstead Heath.

## **Appendices**

- Appendix 1 – Draft Golders Hill Park Zoo – Vision & Collection Plan
- Appendix 2 – Draft Zoo enclosure proposals
- Appendix 3 – Draft Hampstead Heath Drone Guidance 2017
- Appendix 4 – Southern Counties Cross Country Championships Restoration Plan 2017

## **Bob Warnock**

Superintendent of Hampstead Heath

T: 020 7332 3322

E: [bob.warnock@cityoflondon.gov.uk](mailto:bob.warnock@cityoflondon.gov.uk)



## Appendix 1

### Vision

Our vision is to inspire learning and engagement with wildlife through:			
Welfare	Welcoming	Engagement	Collection
Ensuring the health and wellbeing of the collection.	Providing a welcoming, safe and accessible zoo that visitors feel confident to explore.	<p>Inspiring people to develop their knowledge and understanding of wildlife in Britain, and its conservation.</p> <p>Encouraging people to engage and participate in the conservation, management and the development of the zoo.</p>	Ensuring the collection reflects wildlife in Britain and encourages understanding of their relationship with the Heath.



## Appendix 1

### Outcomes Framework

	Outcome	Indicators / Measures
<b>Welfare</b>		
1	The collection is healthy and well cared for.	<ul style="list-style-type: none"> <li>Comply with the husbandry guidelines from the British &amp; Irish Association of Zoo and Aquariums (BIAZA) / European Association of Zoo and Aquariums (EAZA) / American Association of Zoo and Aquariums (AZA)</li> <li>Maintain Zoo License</li> <li>Complete quarterly Veterinary Inspections</li> <li>Organise and lead the biannual Zoo and Farm Ethical Committee</li> <li>Maintain membership of BIAZA</li> </ul>
2	The most suitable and appropriate habit is provided.	<ul style="list-style-type: none"> <li>Maintain Zoo Licence</li> <li>Complete quarterly Veterinary Inspections</li> <li>Organise and lead the biannual Zoo and Farm Ethical Committee</li> <li>Maintain membership of BIAZA</li> <li>Utilise natural materials from the Heath to enhance enclosure habitats</li> </ul>
<b>Welcoming</b>		
1	The Zoo provides a welcoming, safe and accessible environment.	<ul style="list-style-type: none"> <li>Undertake annual visitor satisfaction survey</li> </ul>
<b>Engagement</b>		
1	People have a greater understanding of Wildlife in Britain.	<ul style="list-style-type: none"> <li>Signage around the enclosures is up to date, informative and reviewed annually.</li> </ul>
2	The Open Spaces Department Learning Programme is delivered to children from Early Years Foundation Stage to key stage 3.	<ul style="list-style-type: none"> <li>School visits are recorded and reported annually</li> <li>Feedback is sought from Teachers and/or Parents / Carers</li> <li>Evaluation findings from our Learning Programme are shared.</li> </ul>
3	People are inspired to visit the facility again and/or volunteer in the conservation, management and development of the Zoo.	<ul style="list-style-type: none"> <li>Undertake annual visitor satisfaction survey</li> <li>Increase volunteer participation. Establish baseline date for 2017/18</li> <li>Increase Animal Adoption Scheme uptake by 5%</li> </ul>
<b>Collection</b>		
1	The collection comprises of species associated with wildlife in Britain.	<ul style="list-style-type: none"> <li>Each species will fall into one of the following three categories: current / historic / introduced or invasive, and meets the collection plan.</li> </ul>
2	Visitors understand how the species in the collection relate to the Heath past and present.	<ul style="list-style-type: none"> <li>Undertake annual visitor satisfaction survey</li> </ul>



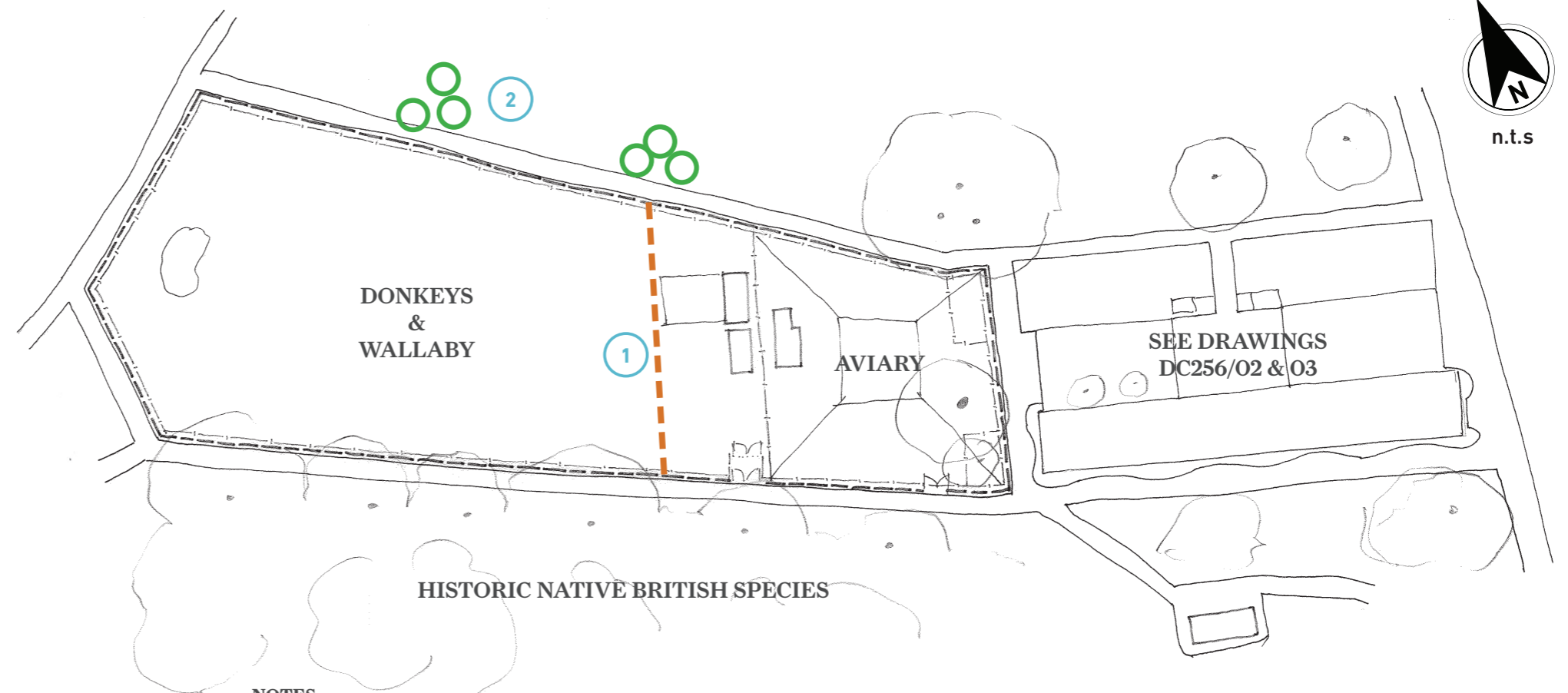
Shed inside donkey enclosure



Donkey enclosure fence line



Use new tree clumps to break up line of fence - note 2 on plan.



**NOTES**

- ① New fence
- ② Proposed tree clumps to break up monotony of fence line

**HISTORIC NATIVE BRITISH SPECIES**  
 - previous inhabitants now extinct on our shores.  
 Using 'cut-outs' with interpretation on the cut out.

**DONKEY ENCLOSURE AND AVIARY PROPOSED CHANGES**

**GOLDERS HILL PARK ZOO**  
**WILDLIFE IN BRITAIN**  
**PAST FUTURE AND PRESENT**  
 DC246/01 - 17th February 2017

**DCLA** Dominic Cole Landscape Architects  
 studio@dominiccole.net / 0207 700 7510 / 42 Brecknock Road, London N7 0DD

© Dominic Cole Landscape Architects Ltd.





WALK THROUGH - RING TAILED LEMUR ON LEFT



WADING BIRD AVIARY (POLY TUNNEL)  
OWLS & KOOKABURRA



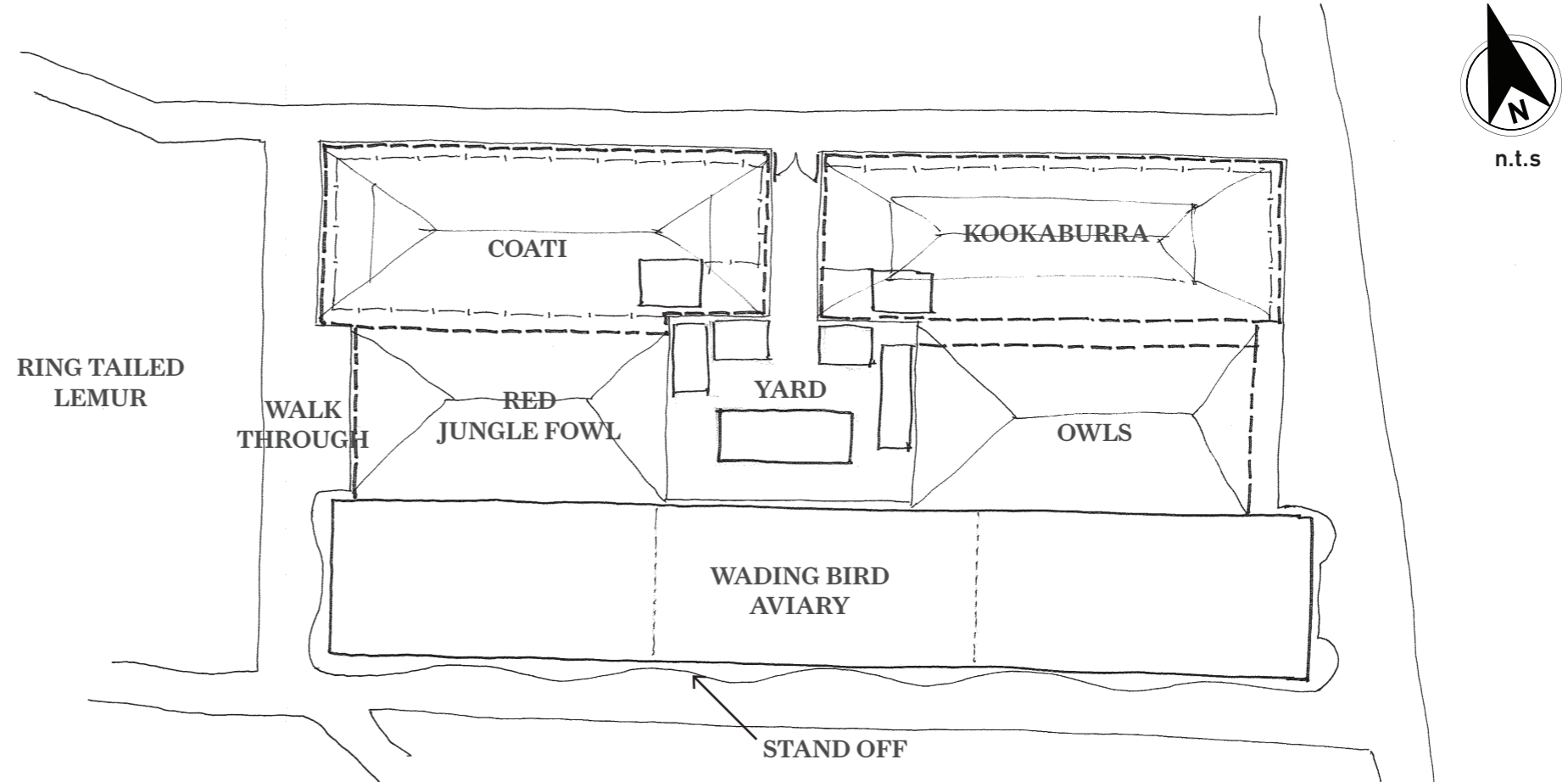
WADING BIRD AVIARY & STAND-OFF RAIL



YARD



RING TAILED LEMUR ENCLOSURE



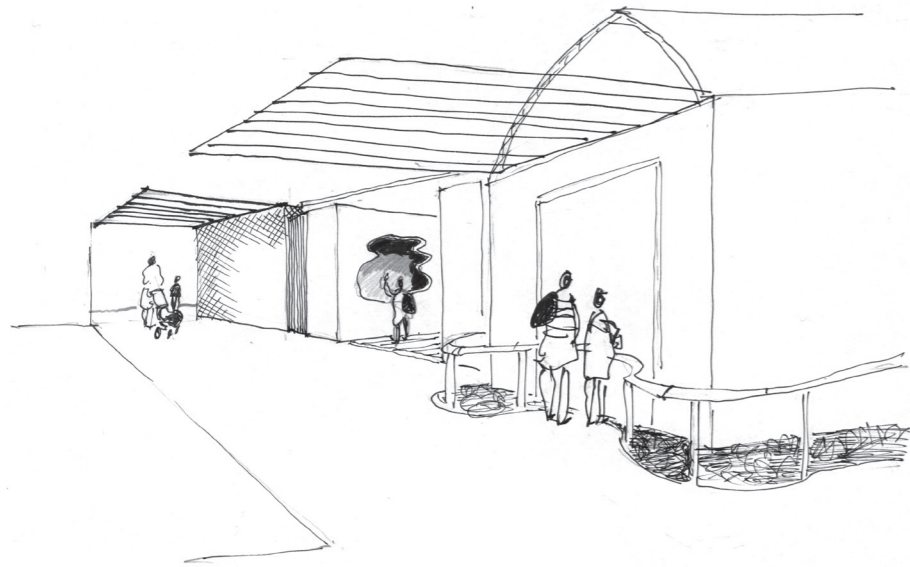
**EXISTING ENCLOSURES AROUND  
CENTRAL YARD**

GOLDERS HILL PARK ZOO  
WILDLIFE IN BRITAIN  
PAST FUTURE AND PRESENT  
DC246/02 - 17th February 2017

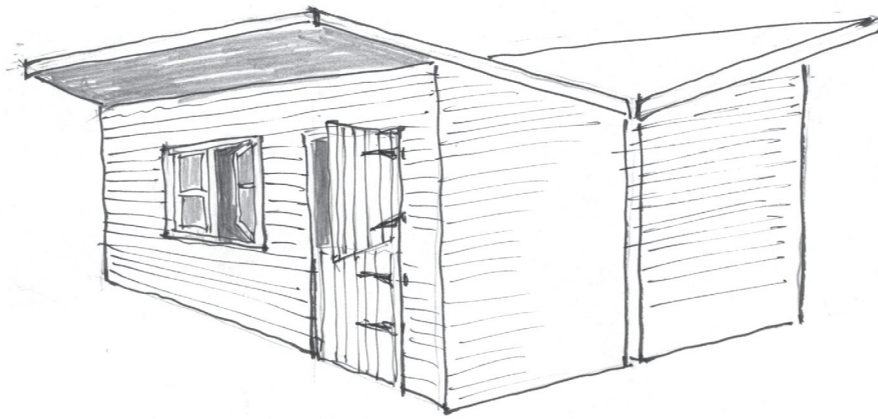
**DCLA** Dominic Cole Landscape Architects  
studio@dominiccole.net / 0207 700 7510 / 42 Brecknock Road, London N7 0DD

© Dominic Cole Landscape Architects Ltd.

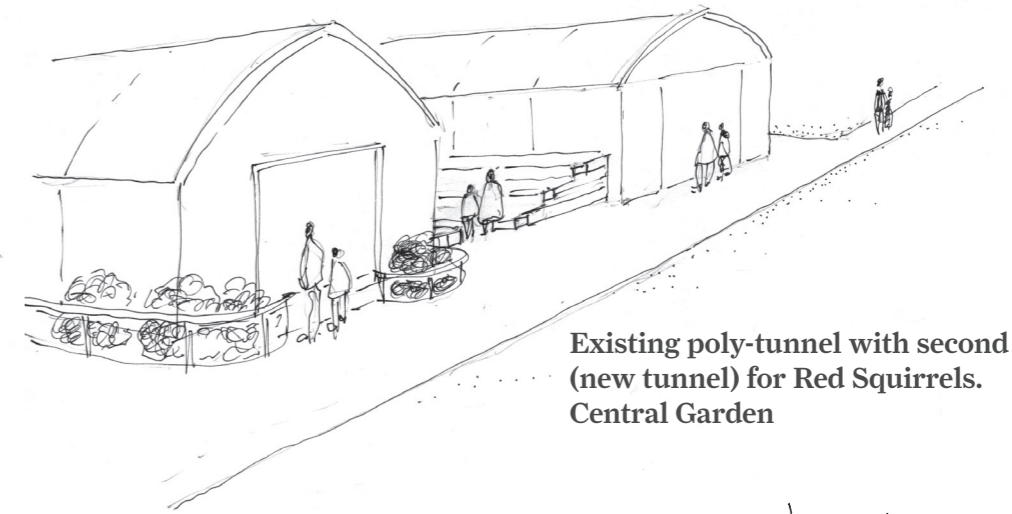




Walk through central vivarium overhead wires and climbers

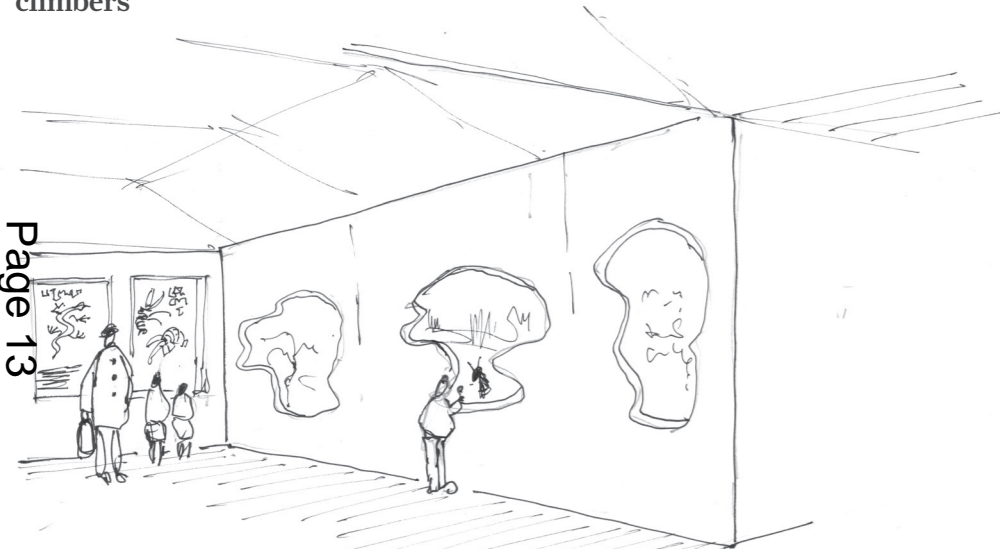


Back to Back 'off the peg' sheds in the yard

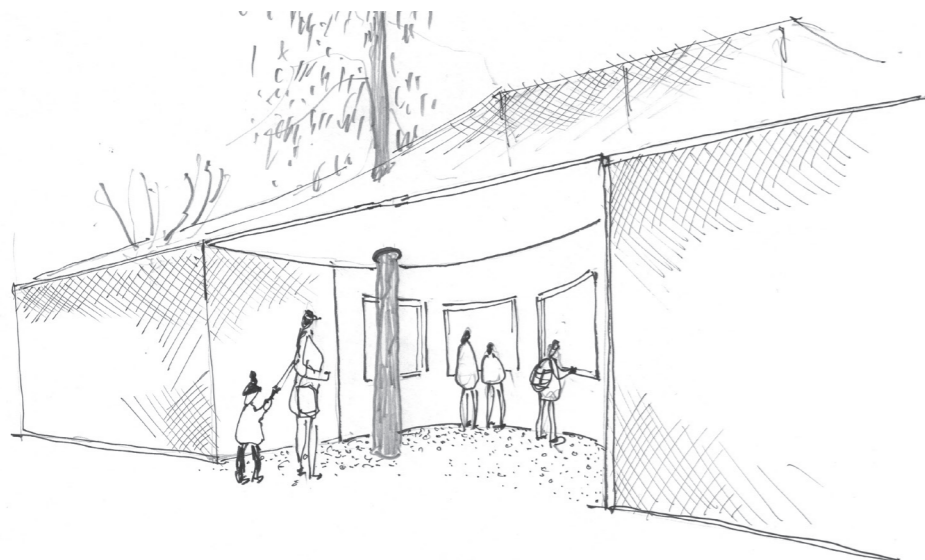
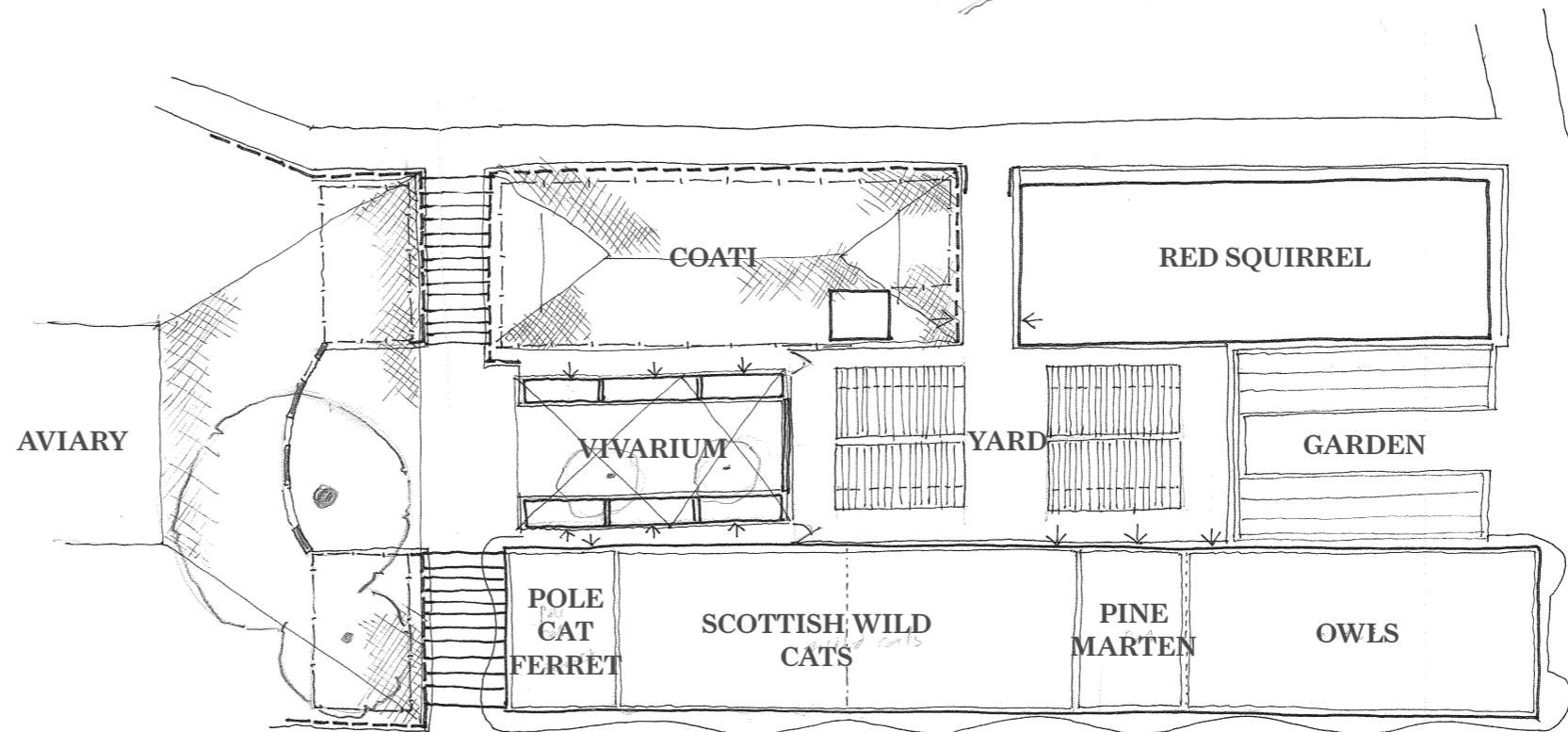


Existing poly-tunnel with second (new tunnel) for Red Squirrels. Central Garden

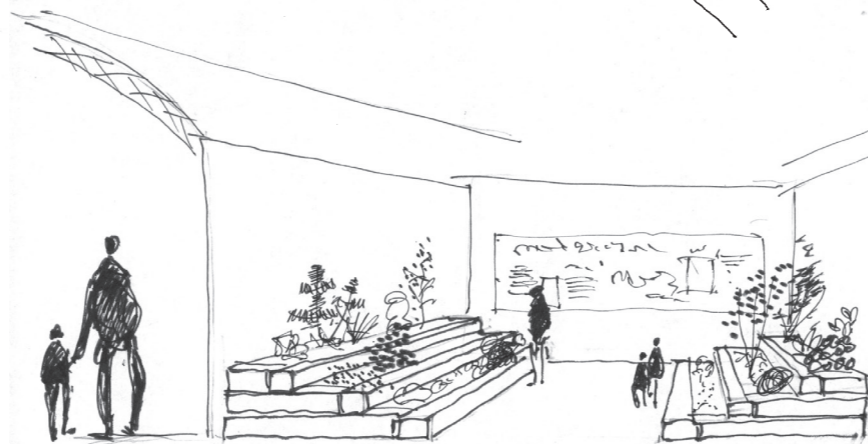
Page 13



Vivarium with see through roof, timber decking and interpretation



New viewing area cut into Aviary



Central garden and interpretation

**PROPOSED CHANGES TO ENCLOSURES AROUND YARD**

GOLDERS HILL PARK ZOO  
 WILDLIFE IN BRITAIN  
 PAST FUTURE AND PRESENT  
 DC246/03 - 17th February 2017

**DCLA** Dominic Cole Landscape Architects

studio@dominiccole.net / 0207 700 7510 / 42 Brecknock Road, London N7 0DD

© Dominic Cole Landscape Architects Ltd.



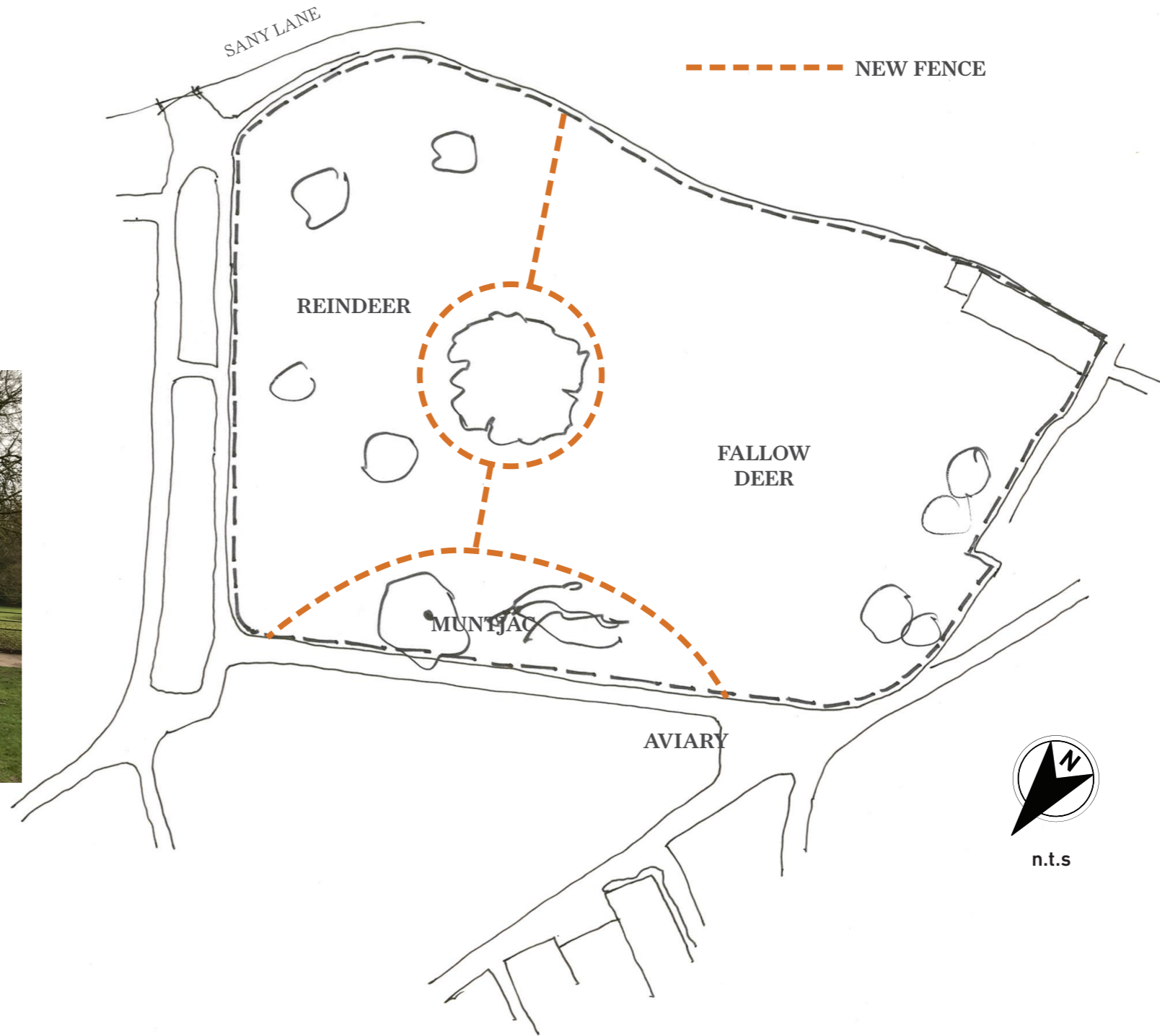


Fallen trees will provide cover for Muntjac



Deer enclosure

Page 14



**PROPOSED NEW ENCLOSURES INSIDE  
DEER ENCLOSURE**

**GOLDERS HILL PARK ZOO**  
**WILDLIFE IN BRITAIN**  
**PAST FUTURE AND PRESENT**  
 DC246/04 - 17th February 2017

**DCLA** Dominic Cole Landscape Architects

studio@dominiccole.net / 0207 700 7510 / 42 Brecknock Road, London N7 0DD

© Dominic Cole Landscape Architects Ltd.





# Draft Hampstead Heath Drone Guidance 2017

---

## Introduction

The City of London Corporation (“the Corporation”) owns and manages Hampstead Heath for the recreation and enjoyment of the public. This guidance has been written in response to privacy, noise and safety concerns from Heath users arising from the use of drones on the Heath. The aim of this document is to provide clarity about the current law and to ensure a consistent approach to drone usage on the Heath.

The use of drones is governed by the Air Navigation Order 2016 (“ANO”) which can be found in full at <http://www.legislation.gov.uk/uksi/2016/765/contents/made>. In simple terms, a camera drone may not be flown on or even close to the Heath without a permission from the Civil Aviation Authority (“CAA”). A drone that does not have any surveillance equipment may be flown on the Heath for personal use, without a permission from the CAA, subject to certain restrictions. A more detailed explanation is set out below.

## Definitions

A small unmanned aircraft (or “**drone**”) means any unmanned aircraft, other than a balloon or a kite, having a mass of not more than 20kg without its fuel but including any articles or equipment installed in or attached to the aircraft at the commencement of its flight.

A small unmanned surveillance aircraft (or “**camera drone**”) means a small unmanned aircraft which is equipped to undertake any form of surveillance or data acquisition.

A “**congested area**” in relation to a city, town or settlement, means any area which is substantially used for residential, industrial, commercial or recreational purposes – having consulted with the CAA and the Metropolitan Police Service (“MPS”), the Corporation’s view is that this includes the whole of Hampstead Heath.

## Restrictions on the use of drones

Under article 94 of the ANO, a person in charge of a drone:-

- may only fly the aircraft if reasonably satisfied that the flight can safely be made;
- must maintain direct, unaided visual contact with the aircraft;
- must not fly the aircraft (if it weighs more than 7kg) within certain types of controlled airspace, without the permission of air traffic control, or otherwise at a height of more than 400 feet;
- must not fly the aircraft for the purposes of aerial work, except in accordance with a permission granted by the CAA.

## Additional restrictions on the use of camera drones

Under article 95 of the ANO, a person in charge of a camera drone requires a permission from the CAA to fly the aircraft:-

# Draft Hampstead Heath Drone Guidance 2017

---

- within 50 metres of any vehicle, structure or person, or within 30 metres of any person on take-off or landing (excluding the controller, etc.);
- over or within 150 metres of an organised open-air assembly of more than 1,000 persons;
- over or within 150 metres of any congested area.

## **Enforcement**

A contravention of any of the applicable provisions of the ANO is a criminal offence. The CAA and the MPS are the relevant enforcement authorities. The role of the Hampstead Heath Constabulary is to advise and educate Heath users as to the relevant rules, and to provide evidence of any breaches to the enforcement authorities in appropriate cases.

## **Commercial filming**

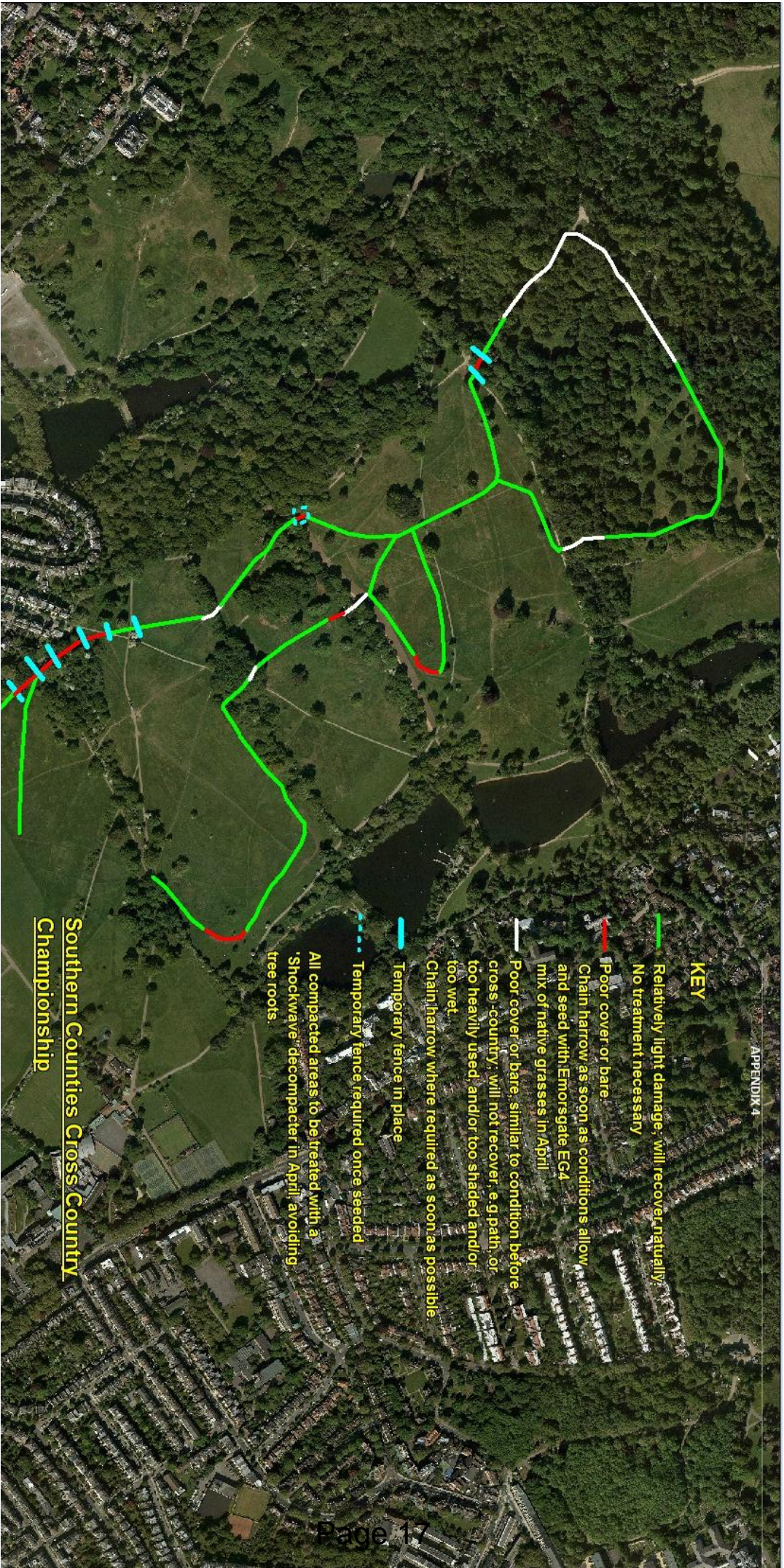
Where it is proposed to carry out commercial filming on the Heath using a drone then, in addition to holding a permission from the CAA, consent for commercial filming must be obtained from the Corporation. Further information can be found at <https://www.cityoflondon.gov.uk/things-to-do/green-spaces/hampstead-heath/visitor-information/Pages/Filming-on-Hampstead-Heath.aspx>.

## **Data protection**

The Information Commissioner's Office advises that the use of camera drones has the potential to be covered by the Data Protection Act 1998 and recommends that users of camera drones should operate them in a responsible way to respect the privacy of others. For more information, visit the ICO's website at <https://ico.org.uk/for-the-public/drones/>.

## **Disclaimer**

Where this guidance offers advice on legal issues, this is given to the best of our understanding. It is not offered as a definitive legal interpretation and is not a substitute for formal legal advice. If formal advice is required you should consult your own legal adviser.



**KEY**

- Relatively light damage; will recover naturally. No treatment necessary.
  - Poor cover or bare. Chain harrow as soon as conditions allow and seed with Emorsgate EG4 mix of native grasses in April.
  - Poor cover or bare; similar to condition before cross-country; will not recover, e.g. path, or too heavily used, and/or too shaded and/or too wet. Chain harrow where required as soon as possible.
  - Temporary fence in place.
  - - - Temporary fence required once seeded.
- All compacted areas to be treated with a 'Shockwave' decompactifier in April, avoiding tree roots.

Southern Counties Cross-Country Championship

This page is intentionally left blank